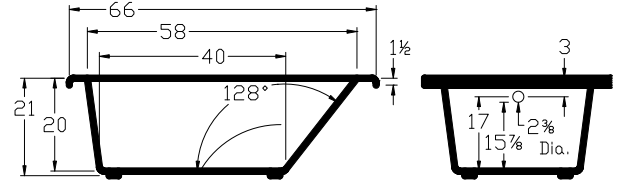
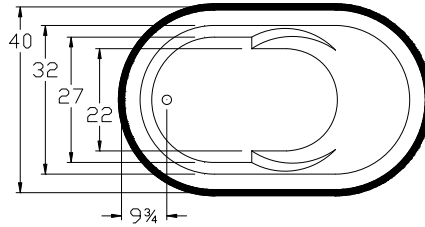


Always check our website for the most updated specifications: [www.zumacollection.com](http://www.zumacollection.com)



Pictured with optional waste and overflow



All bathtub dimensions are ± 1/2".

### CODES AND COMPLIANCE

Products meet or exceed the following standards:

- Underwriters Laboratories (UL)
- Underwriters Laboratories - Canada (cUL)
- ANSI Z124.1 • ANSI A112-19.7
- ANSI A112.19.8

### ELECTRICAL REQUIREMENTS

We recommend one 20 amp ground fault circuit interrupter (GFCI) for each power supply provided with the bathtub.

### DIMENSIONS

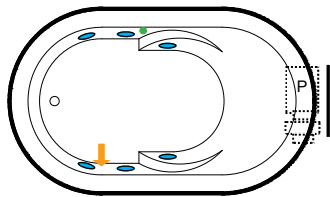
66" x 40" x 22"

Whirlpool Operating Gallons: 45

Gallons to Overflow: 75

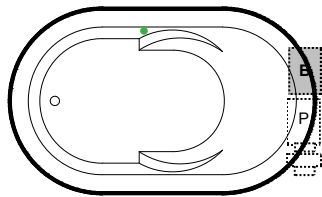
Material: Acrylic

### Whirlpool

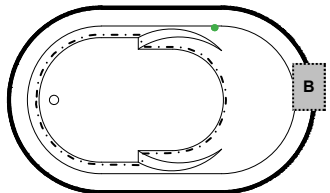


### Combination

(pump and blower location only)



### Airbath System II



### OPTIONAL ACCESSORIES

- Chromotherapy Light
- Grab Bars
- High Density Insulation
- iBath Sound System
- Lo-Profile Tub Edge
- Ozone System  
*(Whirlpool or Airbath)*
- Pillows- 12"
- Rotary Jets
- Waste & Overflow

	P	SYLLENT PUMP		B	BLOWER		JET		ON/OFF CONTROL
		SUCTION			ACCESS PANEL (MINIMUM 16" X 20")				

Undermount    Yes     No

### INSTALLATION TIPS

- Install product according to Owners manual and local codes.
- All whirlpool or Airbath® units require an access panel.
- Hot water supply should be 65-75% of tub capacity or greater. Always consult your local plumber for recommendations as installations will vary.
- Dimensions for undermount installations should be taken directly from the bathtub.
- Cut-out dimensions: Zuma recommends you wait until you have the actual unit or contact us for a template.